

# An Optimization Model for the Vehicle Routing Problem in Multi-product Frozen Food Delivery

Y. Zhang \* and X. D. Chen

School of Economics and Management,  
Beijing Jiaotong University,  
Beijing 100044, China.  
\*12120675@bjtu.edu.cn, xdchen@bjtu.edu.cn

## ABSTRACT

This paper addresses a vehicle scheduling problem encountered in the cold chain logistics of the frozen food delivery industry. Unlike the single product delivery scenario, we propose an optimization model that manages the delivery of a variety of products. In this scenario, a set of customers make requests for a variety of frozen foods which are being loaded together. The objective is to find the routes that represent the minimum delivery cost for a fleet of identical vehicles that, departing from a depot, visiting all customers only once and returning to the depot. The delivery cost includes the transportation cost, the cost of refrigeration, the penalty cost and cargo damage cost based on the characteristics of different frozen food products. Apart from the usual constraints of time windows and loading weight, the study also takes into account the constraints of loading volume related to the unit volume of different frozen foods. We then propose a Genetic Algorithm (GA) method for the model. Computational tests with real data from a case validate the feasibility and rationality of the model and show the efficient combinations of parameter values of the GA method.

Keywords: Vehicle Routing Problem, Genetic Algorithm, Frozen Foods Delivery.

## 1. Introduction

The need for fresh, refrigerated and frozen food has grown continuously in recent years due to high demand for healthy and convenient diets in urban fast-paced daily living. Correspondingly, the market for low-temperature logistics is expanding due to demand for low-temperature food [1]. This paper considers a specific vehicle routing problem in the cold chain distribution industry for a variety of frozen food products. Compared to normal temperature distribution, cold chain distribution requires strict temperature and time control to preserve food quality. Frozen food products with low thermal inertia (such as ice cream) are more vulnerable to any disruption in the cold chain distribution process. As frozen food distribution companies tend to serve rather large numbers of customers in dispersed locations, it is crucial for them to design the routes for vehicles in an efficient way so as to minimize the delivery cost while maintaining or even improving food and service quality for customers.

In the past, most studies on the vehicle routing problem (VRP) have focused on the expansion of

the network and algorithms [2,7,10-13,16-18]. Little attention has been paid to the improvement of the vehicle routing model [3]. The optimization models used for vehicle routing problems in current cold chain distribution studies often aim to minimize the total delivery cost, comprising the transportation cost, energy cost and deterioration cost [4-7]. Also, until now, vehicle routing models have been built for a single product only and the constraints considered in the model and its variants have always been the loading weight and time windows [4-9]. However, as is widely recognized, the reality is that customer orders are not limited to a single frozen food product and different frozen food products ordered by one customer are often loaded together in one vehicle.

The factors considered in this scenario include unit volume, price, the punishment degree and perishable coefficient of different frozen food products.

In addition to the usual constraints of time windows and the loading weight, the volume capacity of the vehicle is also taken into consideration.

This paper proposes a solution to the VRP in multi-product frozen food distribution taking into account the multiple factors discussed above.

The reminder of this paper is organized as follows. Section 2 describes in detail the model development process. In Section 3, the GA approach for the distribution model is proposed. Section 4 applies the GA in a case study. Finally, conclusions and future research are presented in Section 5.

## 2. The routing model for frozen food distribution

### 2.1 Assumptions and constraints

Assuming a fleet of identical vehicles with given internal and external dimensions of length, width and height, the objective is to find a set of minimum cost vehicle routes, starting from and terminating at the depot, such that:

- 1) The depot centre houses a fleet of identical vehicles with a fixed rate  $v$ .
- 2) The loading weight and volume of the vehicle are known and there is no midway assignment.
- 3) The geographic locations and time windows of customers are known.
- 4) Information concerning the mass and loading volume of per unit frozen food products is given.
- 5) Each customer's orders are delivered by exactly one vehicle during distribution, but each vehicle can serve different customers.
- 6) The vehicle maintains a constant temperature inside and outside during distribution.
- 7) The cumulate weight and volume of a vehicle  $\kappa$  ( $\kappa = 1, 2, \dots, K$ ) does not exceed its capacity  $M$  and  $N$  at any point on the route.

### 2.2. Distribution cost analysis

- 1) The cargo damage cost of frozen food

The main damage cost in the process of distribution consists of two parts: a) damage cost accumulated due to transit time, b) damage cost caused by a break in the cold chain during a series

of links including the arrival of food, code inspection and shelving. We assume that the quality of the frozen food in the transportation process and customer service process is inversely proportional to the time and the demand of customers, respectively. Hence, considering different damage rates and the price of frozen food products, the cargo damage cost  $\Theta$  can be expressed by Eq. 1 [4].

$$\Theta = \sum_{\kappa=1}^K \sum_{\nu=1}^H \sum_{\gamma=1}^E (\theta_{\gamma} \tau_{\mu\nu\kappa} + \lambda_{\gamma} \beta_{\gamma\nu}) \chi_{\mu\nu\kappa} \rho_{\gamma} \quad (1)$$

where  $\theta_{\gamma}$  denotes the cargo damage rate of the frozen food  $\gamma$  ( $\gamma = 1, 2, \dots, E$ ) during the process of transportation,  $\lambda_{\gamma}$  is the cargo damage rate of the frozen food  $\gamma$  during customer service,  $\rho_{\gamma}$  represents the unit price of the frozen food  $\gamma$ ,  $\tau_{\mu\nu\kappa}$  indicates the time of vehicle  $\kappa$  from customer  $\mu$  to customer  $\nu$ ,  $\beta_{\gamma\nu}$  is the order of food  $\gamma$  from customer  $\nu$ . The (routing) decision variable  $\chi_{\mu\nu\kappa}$  is defined as

$$\chi_{\mu\nu\kappa} = \begin{cases} 1, & \text{vehicle } \kappa \text{ starts from customer } \mu \text{ to customer } \nu \\ 0, & \text{otherwise} \end{cases}$$

- 2) The vehicle transportation cost

The transportation cost includes fuel consumption, vehicle maintenance, etc. And the cost is generally proportional to the distance [7]. The transportation cost is given by:

$$X = \sum_{\kappa=1}^K \sum_{\mu=1}^H \sum_{\nu=1}^H \varpi_{\mu\nu\kappa} \quad (2)$$

where  $\varpi_{\mu\nu\kappa}$  denotes the transportation cost of vehicle  $\kappa$  between customer  $\mu$  and  $\nu$ .

- 3) The refrigeration cost

The refrigeration cost relates mainly to two aspects. One is heat transfer inside and outside the refrigerator caused by the temperature difference during transportation. On the other hand, heat will exchange during loading/unloading process because of air convection. The refrigeration

cost can be obtained by calculating the cost of the refrigerant consumed. Consumption of the refrigerant is related to the heat transfer coefficient, the surface area of the vehicle, the outside temperature, stored-product temperature and other factors.

a) The thermal load  $\Gamma_\tau$  due to the difference in temperature can be obtained using the following formula [8]:

$$\Gamma_\tau = (1 + \alpha) \times \xi \times \Sigma \times \Delta T \tag{3}$$

where  $\xi$  denotes thermal conductivity,  $\Delta T$  is the temperature difference. The average area of the vehicle  $\Sigma = \sqrt{\Sigma_\omega \Sigma_\nu}$ ,  $\alpha$  is the depreciation degree of the vehicle,  $\Sigma_\omega$  indicates the external surface area and  $\Sigma_\nu$  the internal surface area

The cost of vehicle  $\kappa$  from customer  $\mu$  to customer  $\nu$  is shown as follows:

$$\zeta_\tau^\kappa = \Gamma_\tau \times \tau_{\mu\nu} \times \delta \tag{4}$$

where  $\delta$  denotes the unit cost of refrigerant,  $\tau_{\mu\nu}$  represents the time from customer  $\mu$  to customer  $\nu$ . The cooling cost of refrigerator during transportation can be expressed as follows:

$$\Lambda_1 = \sum_{\kappa=1}^K \zeta_\tau^\kappa \tag{5}$$

b) With reference to the literature [9], the vehicle thermal load during loading/unloading can be obtained using the specific formula:

$$\Gamma_\sigma = (0.54N + 3.22) \times \Delta T \times \beta \tag{6}$$

where  $\beta$  is related to door opening frequency. Its value is shown in Table 1.

Degree	Door opening frequency	$\beta$
A	closed	0.25
B	half of C	0.5
C	2-3 times per hour	1
D	more than 50% of C	1.5
E	double C	2

Table 1. Cross-referencing between  $\beta$  and door opening frequency.

Thus, the cooling cost of vehicle  $\kappa$  at customer  $\nu$  is

$$\zeta_\sigma^\kappa = \Gamma_\sigma \times \sum_{\nu=1}^H \sigma_\nu \times \delta \tag{7}$$

where  $\sigma_\nu$  is the service time at customer  $\nu$ . The cost of refrigeration during loading can be expressed by

$$\Lambda_2 = \sum_{\kappa=1}^K \zeta_\sigma^\kappa \tag{8}$$

The total energy consumption cost  $\Lambda$  is the sum of  $\Lambda_1$  and  $\Lambda_2$

$$\Lambda = \Lambda_1 + \Lambda_2 \tag{9}$$

#### 4) The penalty cost of customers

This research adopts the time windows constraint, which allows for arrival at a time outside the window with a penalty. If the service at customer starts inside the time window  $[\phi_\nu, \varepsilon_\nu]$ , no penalty is incurred. If a vehicle starts servicing customer before time  $\phi_\nu$  or after time  $\varepsilon_\nu$ , a penalty has to be paid. The penalty cost is proportional to the value through non-negative weights  $\varphi_1$  and  $\varphi_2$ , respectively. This study constructed the penalty cost function of time windows during the distribution of a variety of frozen food products. Assuming that the penalty cost is correlated to the price of different frozen food products and the exceeded time, it can be formulated as follows:

$$\Pi_{p\nu} = \begin{cases} 0 & \phi_\nu < \tau_\nu < \varepsilon_\nu \\ \sum_{\gamma=1}^E \varphi_2 \rho_\gamma \beta_{\gamma\nu} (\tau_\nu - \varepsilon_\nu) & \tau_\nu > \varepsilon_\nu \\ \sum_{\gamma=1}^E \varphi_1 \rho_\gamma \beta_{\gamma\nu} (\phi_\nu - \tau_\nu) & \tau_\nu < \phi_\nu \end{cases} \tag{10}$$

where  $\tau_\nu$  is the time of arrival at customer  $\nu$ ,  $\varphi_1$  is the penalty coefficient for being early,  $\varphi_2$  is the penalty coefficient for being late. The weight for delayed delivery at customers is set to be larger than that for early delivery (i.e.  $\varphi_1 > \varphi_2$ ), and the

weights for each customer can be adjusted accordingly.

### 2.3 Establishment of the routing optimization model

$$Z = \Theta + \sum_{\kappa=1}^K \sum_{\mu=1}^H \sum_{\nu=1}^H \sigma_{\mu\nu\kappa} + \Lambda + \Pi_{pv} \quad (11)$$

$$\left\{ \begin{array}{l} \sum_{\gamma=1}^E \sum_{\nu=1}^H \beta_{\gamma\nu} \chi_{\nu\kappa} \leq \eta_1 M, \kappa = 1, 2, \dots, K \end{array} \right. \quad (12)$$

$$\left\{ \begin{array}{l} \sum_{\gamma=1}^E \sum_{\nu=1}^H \beta_{\gamma\nu} v_{\gamma} \chi_{\nu\kappa} \leq \eta_2 N, \kappa = 1, 2, \dots, K \end{array} \right. \quad (13)$$

$$\text{s.t.} \left\{ \begin{array}{l} \sum_{\kappa=1}^K \psi_{\nu\kappa} = 1, \nu = 1, 2, \dots, H \end{array} \right. \quad (14)$$

$$\left\{ \begin{array}{l} \sum_{\mu=0}^H \chi_{\mu\nu\kappa} = \psi_{\nu\kappa}, \nu = 1, 2, \dots, H; \kappa = 1, 2, \dots, K \end{array} \right. \quad (15)$$

$$\left\{ \begin{array}{l} \sum_{\nu=0}^H \chi_{\mu\nu\kappa} = \psi_{\mu\kappa}, \mu = 1, 2, \dots, H; \kappa = 1, 2, \dots, K \end{array} \right. \quad (16)$$

$$\left\{ \begin{array}{l} \phi_{\nu} \leq \tau_{\mu\nu} + \sigma_{\mu} \leq \varepsilon_{\nu}, \nu = 1, 2, \dots, H \end{array} \right. \quad (17)$$

where  $\eta_1$  and  $\eta_2$  represent the utilization rate of the loading weight and loading volume, respectively.  $v_{\gamma}$  is the unit volume of frozen food  $\gamma$ .

The (routing) decision variable  $\chi_{\nu\kappa}$  is defined as

$$\chi_{\nu\kappa} = \begin{cases} 1, & \text{if vehicle } \kappa \text{ services customer } \nu \\ 0, & \text{otherwise} \end{cases}$$

In this model, the objective function (11) aims to minimize the total cost for the vehicles to visit all customers, constraint (12) and constraint (13) ensure that the loading weight and loading volume of each vehicle is not exceeded, equation (14) ensures that each customer is served by only one vehicle, equations (15) and (16) guarantee that each customer is visited exactly once, and equation (17) is the constraint of time windows.

### 3. Solution approach

There are two types of algorithms for solving the VRP. One is the exact algorithm and the other is the heuristic algorithm. The exact algorithm includes the branch and bound method, the cutting plane method, the network flow algorithm, dynamic

programming, etc [10]. As the complexity of the solution for the VRP is NP-hard, the exact solution can only be used to solve a VRP with a small number of distribution points [11].

In contrast, many heuristic algorithms, such as the genetic algorithm (GA) [12-13], hybrid genetic algorithm [14] and particle swarm optimization algorithm [15], have been used widely in a variety of combination optimization problems. Existing literature that compares different algorithms for VRP has demonstrated the superiority of the GA as it can handle greater problems with less computational effort [12-13]. However, the quality of the convergence process in GA depends on the specific choices of strategies and combinations of operators or parameter values [16]. As stated above, the vehicle scheduling problem for distribution companies in frozen food delivery is considerable. Thus, this paper proposes the use of a GA to address the problem and gives a detailed description of the operators.

#### 3.1 The implementation of the genetic algorithm

GA simulates the survival of the fittest among individuals over consecutive generations throughout the solution of a problem.

Each generation consists of a population of character strings that are analogous to the chromosomes. Each individual represents a point in the search space.

The individuals in the population are then exposed to the process of evolution. Genes from good individuals propagate throughout the population, thus making successive generation become more suited to its environment [21]. The overall structure of the GA is illustrated in Figure 1.

Step 1: Set the initial values of loading weight, loading volume, population size, number of iterations, crossover probability and mutation probability.

Step 2: Generate an initial population T of chromosomes for which each chromosome represents a feasible route.

Step 3: Evaluate each chromosome using the fitness function.

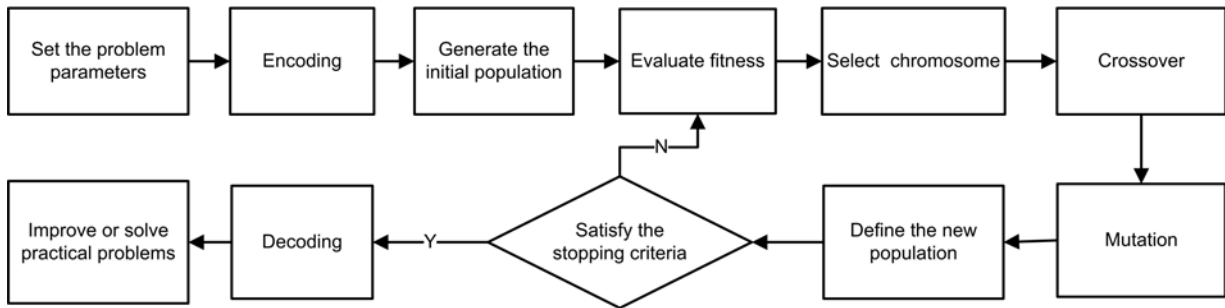


Figure 1. Outline of GA.

Step 4: Select the chromosomes the fitness of which meet the specified requirements according to the selection operator.

Step 5: Cross over two chromosomes  $(\tau_i, \tau_j)$  using the crossover operator, with crossover probability  $\omega_3$ .

Step 6: Chromosome  $\tau$  is designed to mutate according to the mutation operator once it meets the condition  $s_\tau \geq \omega_2$ , where  $s_\tau$  is a parameter randomly sampled in the range  $[0,1]$  and  $\omega_2$  is the mutation probability, otherwise no variation.

Step 7: The GA is implemented with the stopping criteria: the maximum number of iterations and maximum number of iterations without improvement.

### 3.2 Genetic algorithm design notes

In this paper, the chromosome is a permutation of the integer of all customers  $(1,2,\dots, H)$  that place an order for frozen food on separate routes.

This section is devoted to the detailed presentation of the coding method design, fitness evaluation, generation of initial solutions, selection, crossover and the mutation operator.

#### 1) Design of coding method

The distribution centre with  $K$  vehicles determines the number of distribution routes. Add  $K-1$  virtual distribution centres which are represented by 0 to reflect the routing problem of vehicle in the coding.

Figure 2 depicts an example of a chromosome comprising eight customers serviced by three vehicles.

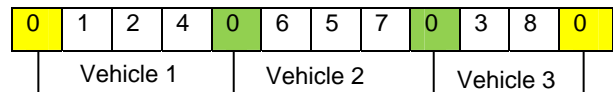


Figure 2. Example of a chromosome.

#### 2) Generation of the initial population

First, generate the permutation of  $H$  customers using the randperm function. The first and the last numbers of the permutation are set to 0 to represent that the vehicle starts from the yard and eventually returns. Then, insert virtual distribution according to vehicle loading weight  $M$  and loading volume  $N$ , and so forth until the population number is met.

During the process, chromosomes with the same fitness as another are replaced by the new random population to ensure the diversity of the population.

#### 3) The fitness evaluation

The corresponding distribution routing scheme of chromosome  $\tau$  ( $\tau = 1,2,\dots,\sigma$ ) is preferred for two reason: (i) it satisfies the constraints of the problem and (ii) the value of the objective function  $Z$  in the routing optimization model is smaller. In this model, the coding design and the generation of the initial population can meet the constraint conditions: (a) each customer receives a delivery service and (b) each customer is served by one vehicle. Each path of the chromosome is judged

by the constraints of vehicle loading weight and loading volume one by one. If the number of infeasible paths of chromosome  $\tau$  is  $M_\tau$  ( $M_\tau = 0$  denotes that chromosome  $\tau$  is a feasible solution), the objective function value is  $Z_\tau$  and the fitness evaluation of chromosome  $\tau$  is  $F_\tau$  determined by the following formula [17]:

$$F_\tau = \sum_{\tau=1}^{\sigma} (Z_\tau + M_\tau * \omega) / \sigma / (Z_\tau + M_\tau * \omega) \quad (18)$$

In the formula, assume that  $\omega = 1000$  is the penalty weight assigned to each infeasible path. The equation guarantees that the chromosome with the lower distribution cost can obtain a higher fitness evaluation.

4) Selection operator design

Based on the roulette wheel selection method (RWS) [11] in which the probability of a chromosome participating in a crossover is directly proportional to its relative fitness:

$$p_\tau = F_\tau / \sum_{\tau=1}^{\sigma} F_\tau \quad (19)$$

Then accumulated normalized fitness values are computed.

The selected individual is the first one the accumulated normalized value of which is greater than  $\zeta$ , which is a random number sampled in the range [0,1] to guarantee the optimal individual can be reserved to the next generation.

5) Crossover operator design

The vehicle routing problem with time windows (VRPTW) is characterized by randomness between groups and orderliness within the group. The general crossover operator will destroy the excellent substring, so we use an efficient crossover operator based on the traditional one-point crossover (1px) operator [19]. In this operator, two virtual distribution points of one chromosome are selected.

If  $n$  is the number of routes in a chromosome, there are  $n+1$  crossover points. Each of these points is selected with equal probability.

Customers on the chosen route are inherited by the offspring from the parent and the other customers are placed in the order in which they appeared in the other parent. After exchanging the roles of the parents, the same procedures are employed to produce the second descendants. Figure 3 is an illustrative example of the crossover operator.

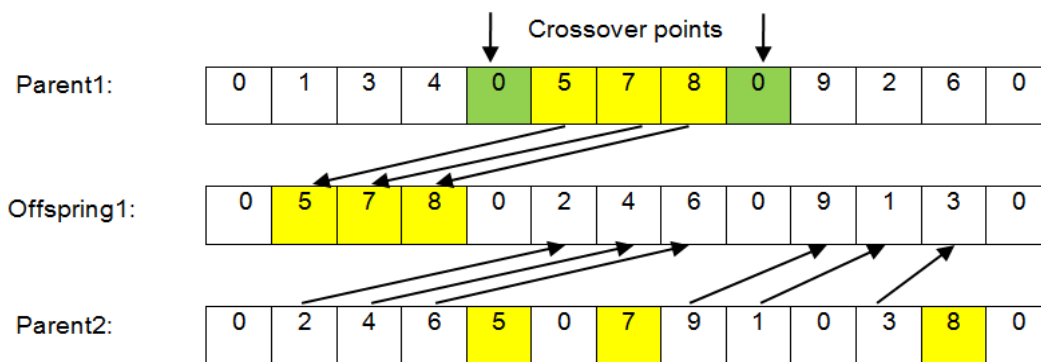


Figure 3. An illustration of a crossover operation on parent.

### 6) Mutation design

The possibility of chromosome variation is relatively small and it plays an auxiliary function in the GA. We propose a 2-exchange mutation operator. As shown in Figure 4, two genetic points on the chromosome, other than the distribution centres, are randomly selected for exchange.

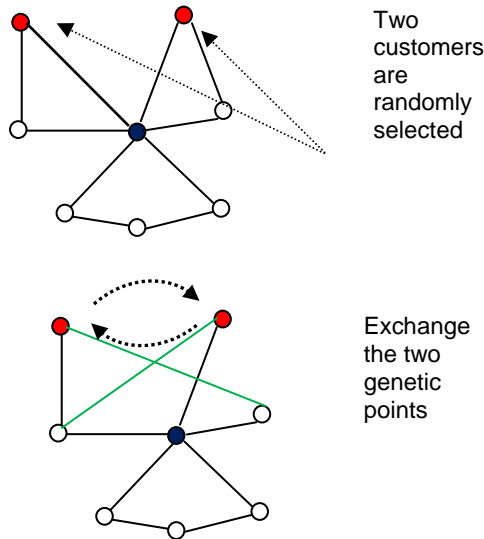


Figure. 4 An illustration of mutation operation.

## 4. Case study of a frozen food distribution company.

### 4.1 Exemplary case

For our computational experiments, we turn to an instance built using actual data from a company working in Beijing. It is a cold chain logistics company with a distribution network covering all districts and counties in Beijing. Each trip starts and ends at the distribution centre. The company has approximately 400 stations and five time periods.

To introduce the steps of GA method for the proposed vehicle routing model, we constructed a smaller instance by reducing the number of stations and focusing on the period from 3:00 am to 8:00 am. We chose nine large Carrefour stores in Beijing as the customers, as shown in Figure 5.

Usually, the suggested storage temperature of frozen food products is below  $-18^{\circ}\text{C}$ , in which microbial growth is completely stopped, and both

enzymatic and non enzymatic changes continue but at much slower rates during frozen food shelf life [20].

We assume that the average temperature outside is  $20^{\circ}\text{C}$  and the temperature difference will stay at  $38^{\circ}\text{C}$ . The assumptions concerning customer locations (Table 2), vehicles (Table 3), and frozen product information (Table 4) are based on the results of a survey.

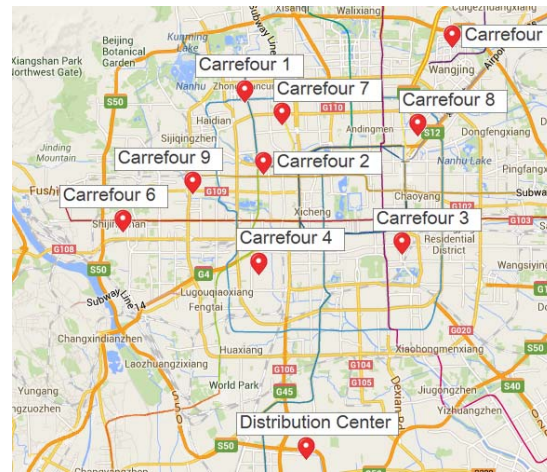


Figure 5. Locations of Carrefour stores in Beijing.

### 4.2 Computational experiments of the case.

As our problem is highly combinatorial, the performance of the GA strongly depends on its parameterization [21]. This section reports the results of computational experiments for different parameter combinations to determine the optimal GA parameter settings.

All the algorithms previously described in this paper are implemented in Matlab. The GA is carried out on a 2.09 GHz Intel CPU in Microsoft Windows XP. The main aim of the experiment is to determine the optimal GA parameter settings to obtain the best algorithm performance. For this purpose, we tried different GA parameters including the population size  $\omega_1$ , the mutation probability  $\omega_2$  and the crossover probability  $\omega_3$  to determine the distribution cost. The results, summarized in Figures 6–7, were obtained from 10 independent runs for different parameter combinations.

Item	centre	1	2	3	4	5	6	7	8	9
centre	0	30.3	25.6	24.2	20.4	40.7	26.4	28.4	34.3	26.9
1	30.3	0	7.4	20.9	14.1	15.3	16.1	3.8	13	9.6
2	25.6	7.4	0	13.7	8.6	17.3	13.6	6.7	12.8	9.6
3	24.2	20.9	13.7	0	10	17.7	19.2	18.6	10.2	14
4	20.4	14.1	8.6	10	0	24.1	13	14	19.8	10.4
5	40.7	15.3	17.3	17.7	24.1	0	32.6	16.9	7.3	26
6	26.4	16.1	13.6	19.2	13	32.6	0	16.1	26.4	7.1
7	28.4	3.8	6.7	18.6	14	16.9	16.1	0	9.4	12.4
8	34.3	13	12.8	10.2	19.8	7.3	26.4	9.4	0	18.6
9	26.9	9.6	9.6	14	10.4	26	7.1	12.4	18.6	0
Ice cream (kg)		26	21	25	25	26	18	24	29	30
Frozen pastry (kg)		202	176	211	175	200	120	210	230	150
Service time (h)		0.65	0.57	0.70	0.58	0.63	0.40	0.83	0.75	0.50
Required time window $[\phi_v, \varepsilon_v]$		4:00 - 5:00	4:00 - 6:00	3:00 - 5:00	5:00 - 7:00	4:00 - 6:00	3:00 - 5:00	5:00 - 8:00	3:00 - 6:00	6:00 - 8:00

Table 2. Distance between the delivery centre and customer, requirement for frozen food products and time constraints.

Parameter	Value	Parameter	Value
M	1000 kg	$\beta$	1
$\eta_1$	0.95	$\xi$	2.49 kcal/(h·m <sup>2</sup> ·°C)
$\eta_2$	0.925	$\alpha$	0.08
$\phi_1$	0.1%	$\nu$	30 km/h
$\phi_2$	0.5%	$\delta$	0.05 yuan/kg
A	425 cm * 168 cm * 240 cm	B	205 cm * 142 cm * 120 cm

Table 3. Vehicle parameter names and values.

Frozen food	Loading volume	Damage percentage during transportation	Damage percentage during service	Average price
$\gamma$	(cm <sup>3</sup> /kg)	(%)	(%)	(yuan/kg)
Symbol	$v_\gamma$	$\theta_\gamma$	$\lambda_\gamma$	$\rho_\gamma$
Ice cream	8000	0.08	0.2	75
Frozen pastry	4000	0.04	0.07	20

Table 4. Parameter names and values of different frozen food products.



Figure 6 shows us the best, worst and average routing costs among the 10 runs of GA with  $\omega_2 = 0.02$ ,  $\omega_3 = 0.7$  and different population sizes for instance. The results show that the GA method with a discrete population size from 10 to 100 can always find the best solution within 10 runs. Furthermore, the worst and average values are relatively small, especially when  $\omega_1 \in [60-100]$ . It is a testament to the impact of the GA method that global searching ability increases with increased population size [22].

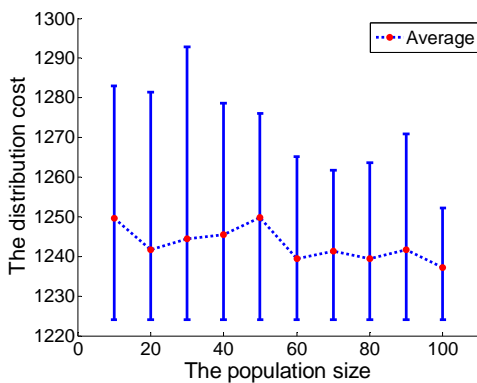


Figure 6. Results influenced by population size.

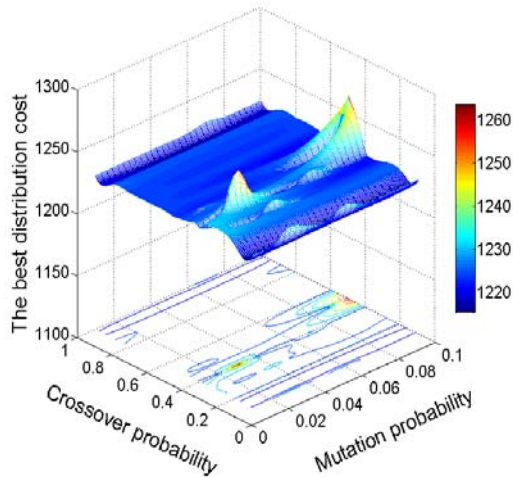


Figure 7. The best distribution cost for different combinations of mutation rate and crossover rate.

In Figure 7, the behaviours for different combinations of mutation probability and crossover probability are given. Behaviour is defined as the best distribution cost among 10 runs of each combination. The experimental data in the above surface chart come from 1000 combinations with a population size  $\omega_1 = 60$ , the mutation probability  $\omega_2 \in [0.01-0.1]$  and crossover probability  $\omega_3 \in [0.1-1]$ . The results show that the GA with crossover probability  $\omega_3 \in [0.5-0.9]$  and mutation probability  $\omega_2 \in [0.02-0.09]$  can always find the best distribution cost, as seen in Figure 7. However, the results with crossover probability  $\omega_3 \in [0.1-0.4]$  and mutation probability  $\omega_2 \in [0.01-0.04] \cup [0.07-0.1]$  for the model are unsatisfactory.

#### 4.3 Analysis of results

In this subsection, the total routing cost of 100 iterations obtained from the GA when  $\omega_1 = 60$ ,  $\omega_2 = 0.09$  and  $\omega_3 = 0.6$  is shown in Figure 8. The distribution cost decreases with increasing iterations until reaching the best solution of 1224.04 which operates 74 iterations without improvement. The results represent the convergence characteristics of GA for the case.

Detailed information on the optimal chromosome is shown in Table 5. According to the result, the distribution centre needs three vehicles to complete the delivery work. The best distribution program is as follows: the route for vehicle 1 is 0-6-9-4-0, the route for vehicle 2 is 0-2-1-7-0 and the route for vehicle 3 is 0-3-8-5-0. The transportation cost, frozen cost and cargo damage cost of the three vehicles are comparable. From the perspective of the vehicle utilization, there is no phenomenon of excessive overloading, which is in favour of vehicle maintenance. Except for the penalty cost of waiting in the case of vehicle 1, the remaining vehicles can serve the customers within their time windows. Overall, the proposed model can provide distribution companies with a reasonable and practical vehicle scheduling program, thereby saving costs, maintaining food quality and improving customer satisfaction.

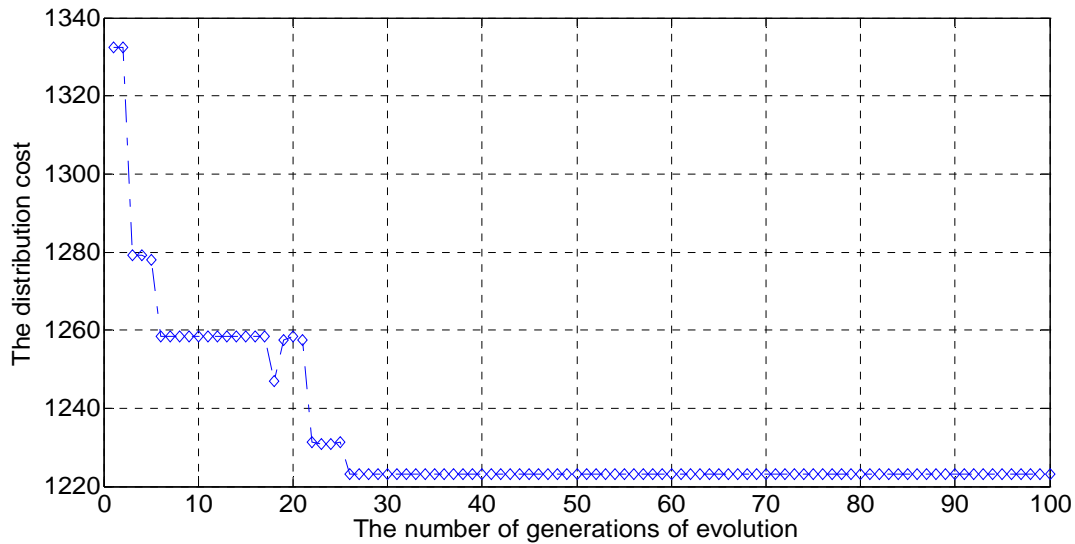


Figure 8. Results of iteration in distribution case.

Vehicle ID	Visit sequence	Transportation cost	Frozen cost	Cargo damage cost	Penalty cost	Loading weight	Loading volume
1	06940	64.30	282.98	17.33	15.18	518	2.36
2	02170	65.20	292.11	19.03	0	659	2.92
3	03850	82.40	364.35	21.16	0	721	3.20
Total cost	1224.04						

Table 5. The optimal chromosome analysis.

### 5. Conclusions and future research

This paper investigates a unique vehicle routing problem in the frozen food distribution industry taking into account various factors. The problem is of interest because of its theoretical complexity and the important practical applications in cold chain distribution. We formulate the problem into one optimization model with the objective of minimizing the total cost (including transportation cost, refrigeration cost, penalty cost and cargo damage cost) based on a real scenario. We also propose one heuristic, genetic algorithm, to solve this problem. As this problem is unique and no benchmark exists, experiments have been conducted using an example case. The case was designed based on actual information in a frozen

food distribution company to verify the rationality and the feasibility of the model in improving the efficiency of transport while ensuring the food fresh and safe. In general, we find that the GA method can provide sound solutions with good robustness and convergence characteristics in a reasonable time span.

The focus of our future studies in this area will be to increase the complexities of assumptions to make them closer to the real world. For example, some constraints commonly used in container loading research, such as the loading-bearing strength of the boxes and vertical stability of the foods, can be used in the vehicle routing problem for frozen food delivery [23]. There are also factors that are common but not known in advance in real-

world cold chain distribution, such as the travel time of vehicle, service time for customers and customers' different delivery requirements. Other factors include fleet size, mixed-type vehicles, multi-temperature joint distribution and vehicle routing problems with backhauls, etc.

These factors have a considerable impact on system performance. Thus, research on vehicle scheduling problems in frozen food distribution including these factors is of great interest and importance.

### **Acknowledgements**

This research was funded by the Lab of Logistics Management and Technology, School of Economics and Management, Beijing Jiaotong University.

### **References**

- [1] C. I. Hsu et al., "Optimal delivery cycles for joint distribution of multi-temperature food," *Food Control*, vol. 34, no.1, pp. 106-114, 2013.
- [2] W. B. Hu, "A hybrid chaos-particle swarm optimization algorithm for the vehicle routing problem with time window," *Entropy*, vol. 15, no.4, pp. 1247-1270, 2013
- [3] Y. Jin and Y. Z. Ding, "Research on VRPTW model with the restricts of both weight and volume," *Logistics Technology*, vol. 32, no.4, pp. 53-56, 2009.
- [4] G. Zhao and Y. F. Zhang, "On the cold chain logistics routing optimization," in 30th Chinese Control Conference, Yantai, People's Republic Of China, 2011, pp. 2063-2068.
- [5] X. H. Miao et al, "The 3rd part cold chain logistics routing optimization," *Operations Research and Management Science*, vol. 20, no 4, pp. 32-38, 2011.
- [6] R. Guo and H. J. Lan, "Fresh food distribution model based on cold chain," in International Conference on Engineering and Business Management, Chengdu, People's Republic of China, 2010, pp. 2594-2597.
- [7] H. Gu et al., "Optimization and algorithm for the vehicle distribution route of urban cold-chain logistics model," 3rd International Conference on Operations and Supply Chain Management, Wuhan, Peoples Republic of China, 2009, pp. 621-628.
- [8] H. L. Wang et al., "Distribution of perishable food based on models with time windows," *Industrial Engineering Journal*, vol. 11, no.3, pp. 127-130, 2008.
- [9] Y. Wang and X. Chen, "Research on vehicle routing problem of cold chain logistics," in 2010 Second International Conference on Multimedia Information Networking and Security, Nanjing, People's Republic of China, 2010, pp. 329-334.
- [10] C. Y. Liu and J. J. Yu, "Multiple depots vehicle routing based on the ant colony with the genetic algorithm," *Journal of Industrial Engineering and Management*, vol. 6, no.4, pp. 1013-1026, 2012.
- [11] C. C. Lu and V. F. Yu, "Data envelopment analysis for evaluating the efficiency of genetic algorithms on solving the vehicle routing problem with soft time windows," *Computers & Industrial Engineering*, vol. 63, pp. 520-529, 2013.
- [12] R. Liu et al., "Heuristic algorithms for a vehicle routing problem with simultaneous delivery and pickup and time windows in home health care," *European Journal of Operational Research*, vol. 230, no.3, pp. 475-486, 2013.
- [13] Y. F. Deng et al., "Improvement of genetic algorithm for vehicle routing problems with time windows," in 3rd International Conference on Intelligent System Design and Engineering Applications, Hong Kong, Peoples Republic of China, 2013, pp. 866-869.
- [14] A. Belloufi et al., "Optimization of Turing Operations by using a hybrid genetic algorithm with sequential quadratic programming," *Journal of Applied Research and Technology*, vol. 11, pp. 88-94, 2013.
- [15] Gerardo A. and Laguna-Sánchez et al., "Comparative study of parallel variants for a particle swarm optimization algorithm Implemented on a multithreading GPU," *Journal of Applied Research and Technology*, vol. 7, no.3, pp. 292-309, 2009.
- [16] B. Mohamed and G. Michel, "An adaptive evolutionary approach for real-time vehicle routing and dispatching," *Computers & Operations Research*, vol. 40, no.7, pp. 1766-1776, 2013.
- [17] Z. F. Zhang et al., "Vehicle scheduling optimization based on improved genetic algorithm," *China Water Transport*, vol. 9, no.4, pp. 73-75, 2009.
- [18] Z. Cickova, "Solving the real-life vehicle routing problem with time windows using self-organizing migrating algorithm," *Ekonomicky Casopis*, vol. 61, no. 5, pp. 497-513, 2013.
- [19] T. Murata and H. Ishibuchi, "Performance evaluation of genetic algorithms for flowshop scheduling problems," 1st IEEE conference on evolutionary computation, Orlando, FL, USA, 1994, pp. 812-817.

[20] R. M. Cruz et al., "Effect of cold chain temperature abuses on the quality of frozen watercress," *Journal of Food Engineering*, vol. 94, no.1, pp. 90-97, 2009.

[21] F. Yaman and A. E. Yılmaz, "Impacts of genetic algorithm parameters on the solution performance for the uniform circular antenna array pattern synthesis problem," *Journal of Applied Research and Technology*, vol. 8, no.3, pp. 378-394, 2010.

[22] X. X. Liu and M. X. Dou, "The impact of population size on the performance of genetic algorithm," *Economic and Technological Cooperation*, no.7, pp. 116-118, 2012.

[23] J. Lenoardo et al., "An optimization model for the vehicle routing problems with practical three-dimensional loading constraints," *International Transactions in Operational Research*, vol. 20, pp. 645-666, 2013.